

# Podoblock

## DR-Cowboy Package.

The optimal combined package of DR-Products to make all X-rays needed safely and in a standardized fashion.

This is what you need, for mobile or stationary use in the clinic.

Podoblock

DR-Cowboybox

DR-Combibox LM / AP

Combibox Dummy LM



## DR-Combibox LM.

The Skyline side of the Combibox has the same features as the original DR-Skylinebox.

Because of the special angle the horse is standing comfortably and there is more space for the X-ray generator.

If the DR-Skyline box is turned over it has the extra features to make easy LM and AP flat views of the foot.

The special Adapters on the DR-Combibox allow to take "hands-free" X-rays.



## DR-Combibox LM / AP.

There is the possibility to choose between only the LM adapter or, your best option of course, LM and AP adapters.

This way it is not necessary to replace the foot for both exams.

## DR-Combibox SET.

Both standing feet on the same height is advised with LM and AP examinations.

That's why our Combibox Dummy can also be supplied with the DR-Combibox.

## DR-Combibox LM / AP



**DR-Protectionbox.**  
**Light-weight protection box.**  
**Handheld.**  
**Optional:**  
**Grid Compartment**



**DR-Podo-Protectionbox.**  
**Protectionbox with 5mm adaptors to place in our Podoblock and Combibox.**  
**Guarantees the same direction and angle with hoof examinations at all times.**  
**Optional: Grid Compartment**

**DR-Cowboybox "all-in-one"**  
**Protectionbox, Podo-Protectionbox and Remote cassette holder all in one.**  
**Standard with a mountable 750mm grip which can be turned 360° to get extra distance.**  
**Mountable and height adjustable foot 300mm**  
**Optional: Grid Compartment.**



**DR-Skylinebox.**  
**Ideal box made of 20mm Polycarbonate for standard Skyline exams of the foot. This box is tested for max. load 1050Kg, if you want to have the certificate of this rapport, please contact us.**  
**Because of the special 5° angle the horse is standing comfortably and there is more space for the X-ray generator.**



# Podoblock

### Product Description :

Aluminium. - Incl. 1 Topblock. - Rubber Feet.

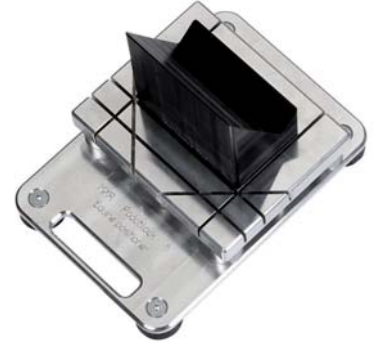
LM / AP / 45° Handsfree system.

### Specifications :

In combination with our Podoholder this unique system guarantees maximum radiation distance and no fingers on the X-rays.

The height from ground to tip off hoof in Podoblock:

90 mm - 120 mm - 170 mm



### Product Description : Combibox.

Above all the features of the Skylinebox when turned over, also to be used for LM flat and upright pedal.

With standard hands-free system and optional Podoholder.

1 box that features making Skyline, LM and AP X-rays of the foot.

### Specifications :

Available for all sizes Analogue and CR cassettes. Rubber feet.

Polycarbonate 10mm Height 70 mm. 3M Antislip. Skyline Angle 5°.

Hands free system with Podoholder: LM or LM & AP

### DR-Dentalbox.

Protectionbox, front and back side from 6mm Polycarbonate for intraoral X-rays of the incisors and canines.

The mountable 400mm long stick, can be turned 360°.

This feature guarantees a minimum of radiation for the person who holds the cassette.

